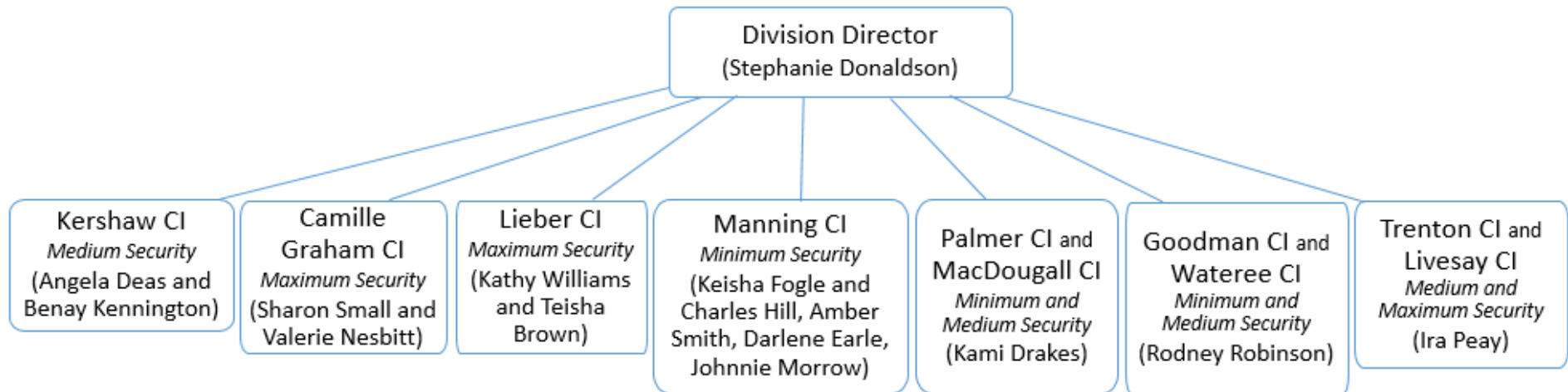


## Programs, Reentry, and Rehabilitative Services Organization Chart - Reentry Division<sup>5</sup>

Reentry Division reports to the Deputy Director of Programs, Reentry, and Rehabilitative Services



### Institutions without Reentry Lead

*Medium:* Allendale; Evan; Ridgeland; Turbeville; Tyger River

*Max:* Broad River; Kirkland; Lee; McCormick; Perry

<sup>5</sup> S.C. House of Representatives, House Legislative Oversight Committee, “Agency Presentation – Programs, Reentry, and Rehabilitative Services Unit (June 18, 2019),” under “Committee Postings and Reports,” under “House Legislative Oversight Committee,” under “Corrections, Department of,” and under “Meetings,”

[https://scstatehouse.gov/CommitteeInfo/HouseLegislativeOversightCommittee/AgencyWebpages/Corrections/SCDC%20Presentation%20-%20PRRS%20Division%20UPDATED%20\(7.25.19\).pdf](https://scstatehouse.gov/CommitteeInfo/HouseLegislativeOversightCommittee/AgencyWebpages/Corrections/SCDC%20Presentation%20-%20PRRS%20Division%20UPDATED%20(7.25.19).pdf) (accessed October 9, 2019), slide 16. Hereinafter “PRRS Presentation.”